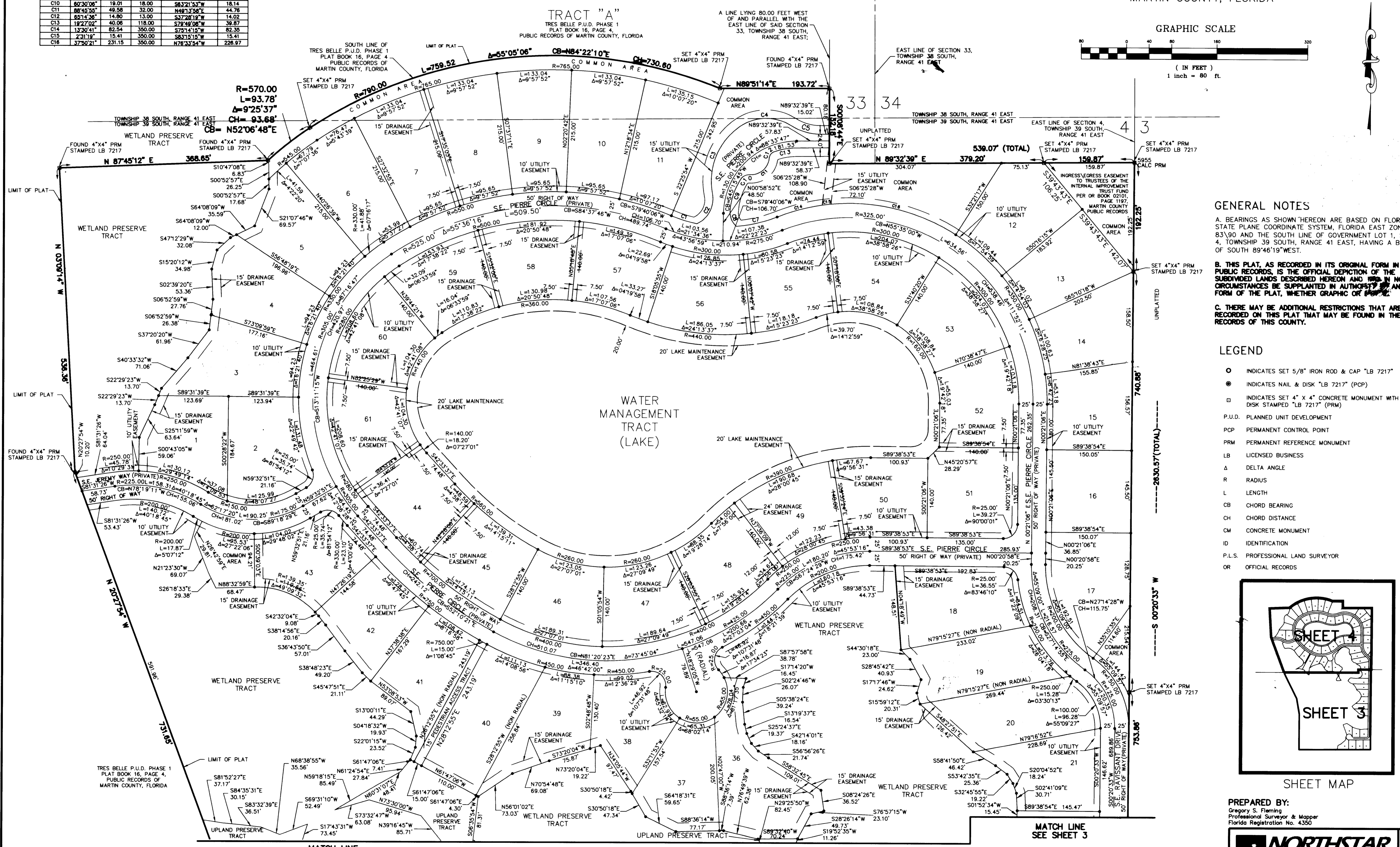
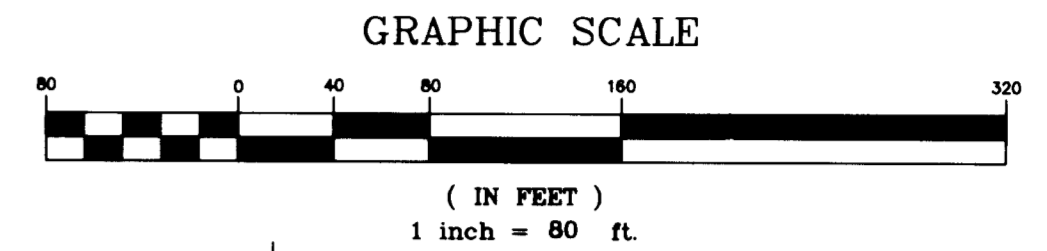


A PLAT OF **Flat Book 16 Page 28**
TRES BELLE P.U.D. PLAT NO. 2

BEING A PORTION OF LAND LYING IN
 SECTION 4, TOWNSHIP 39 SOUTH, RANGE 41 EAST
 AND SECTION 33, TOWNSHIP 38 SOUTH, RANGE 41 EAST,
 MARTIN COUNTY, FLORIDA

CURVE TABLE				
CURVE	DELTA	LENGTH	RADIUS	CHORD BEARING
C1	105°23'	47.48	250.00	S73°00'33"E
C2	78°41'23"	64.25	48.00	N27°16'47"E
C3	88°09'41"	138.10	117.00	S22°00'56"W
C4	88°59'40"	85.86	82.00	S88°33'17"W
C5	32°32'48"	55.67	98.00	S74°10'57"E
C6	17°45'37"	51.16	165.00	S15°38'33"E
C7	18°58'18"	74.05	250.00	N78°58'04"E
C8	53°38'38"	30.88	33.00	S22°28'24"E
C9	28°44'55"	59.21	118.00	S19°44'22"W
C10	80°30'08"	19.01	18.00	S83°21'53"W
C11	88°45'55"	48.58	32.00	N44°13'58"E
C12	83°14'34"	14.80	13.00	S37°28'19"W
C13	19°27'02"	40.06	118.00	S79°49'08"W
C14	13°30'41"	82.54	350.00	S73°14'15"W
C15	2°31'19"	15.41	350.00	S83°15'15"W
C16	37°50'21"	231.15	350.00	N78°33'34"W



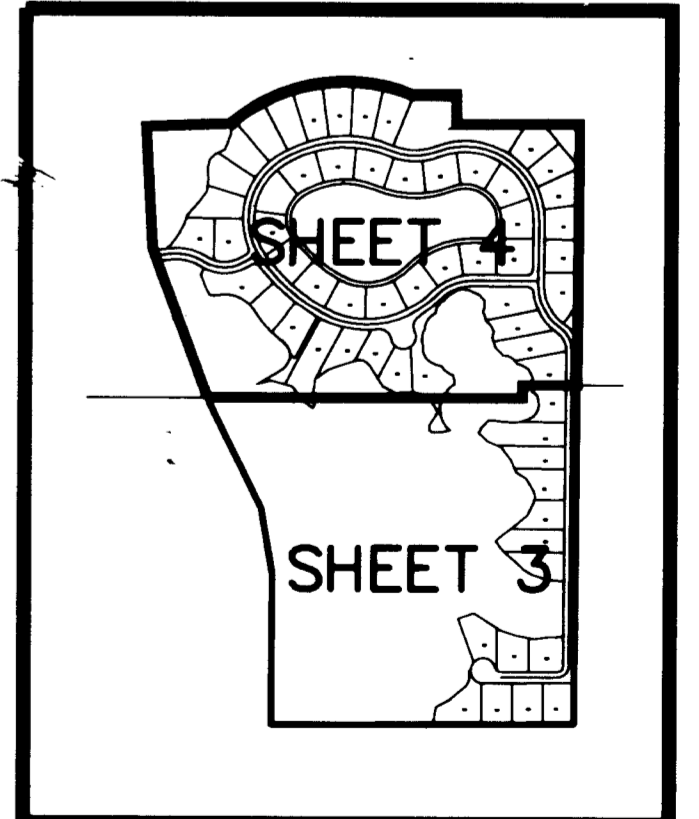
GENERAL NOTES

A. BEARINGS AS SHOWN HEREON ARE BASED ON FLORIDA STATE PLANE COORDINATE SYSTEM, FLORIDA EAST ZONE, NAD 83/90 AND THE SOUTH LINE OF GOVERNMENT LOT 1, SECTION 4, TOWNSHIP 39 SOUTH, RANGE 41 EAST, HAVING A BEARING OF SOUTH 89°46'19" WEST.

B. THIS PLAT, AS RECORDED IN ITS ORIGINAL FORM IN THE PUBLIC RECORDS, IS THE OFFICIAL DEPICTION OF THE SUBDIVIDED LANDS DESCRIBED HEREON AND IN NO CIRCUMSTANCES BE SUPPLEMENTED IN ANY OTHER FORM OF THE PLAT, WHETHER GRAPHIC OR NOT.

C. THERE MAY BE ADDITIONAL RESTRICTIONS THAT ARE NOT RECORDED ON THIS PLAT THAT MAY BE FOUND IN THE PUBLIC RECORDS OF THIS COUNTY.

- LEGEND**
- INDICATES SET 5/8" IRON ROD & CAP "LB 7217"
 - INDICATES NAIL & DISK "LB 7217" (PCP)
 - ⊙ INDICATES SET 4" X 4" CONCRETE MONUMENT WITH ALUMINUM DISK STAMPED "LB 7217" (PRM)
 - P.U.D. PLANNED UNIT DEVELOPMENT
 - PCP PERMANENT CONTROL POINT
 - PRM PERMANENT REFERENCE MONUMENT
 - LB LICENSED BUSINESS
 - Δ DELTA ANGLE
 - R RADIUS
 - L LENGTH
 - CB CHORD BEARING
 - CH CHORD DISTANCE
 - CM CONCRETE MONUMENT
 - ID IDENTIFICATION
 - P.L.S. PROFESSIONAL LAND SURVEYOR
 - OR OFFICIAL RECORDS



SHEET MAP

PREPARED BY:
 Gregory S. Fleming
 Professional Surveyor & Mapper
 Florida Registration No. 4350

NORTHSTAR GEOMATICS
 P.O. BOX 2371 STUART, FL 34995
 OFFICE (772) 781-6400 FAX (772) 781-6462
 LICENSED BUSINESS NO. 7217

Scale
1" = 80'
 Sheet
4 of 4